

# Cu

## Copper alloys

Material information



### Die forgings

### Open die/hand forgings



ZOP Co. Ltd FORGING PLANT  
ul. Kuźnicza 13  
21-045 Świdnik k/Lublina  
POLAND  
[www.kuznia-zop.pl](http://www.kuznia-zop.pl)

Tel: +48 81 751 50 09  
Tel: +48 81 751 26 00  
Fax: +48 81 468 09 11

e-mail: [kuznia-zop@kuznia-zop.pl](mailto:kuznia-zop@kuznia-zop.pl)

# Cu

## Copper alloys

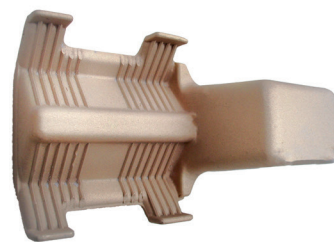
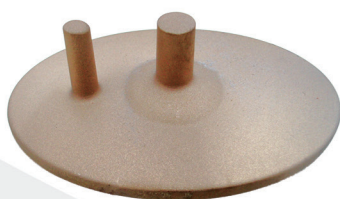
### Material information

Basing on 50-year experience we offer the highest quality open die/hand and die copper alloys forgings designed for energy and many other branches of industry. Applications: connectors, operating high-voltage parts, water distribution, gas components, security pressure reducers, etc. Moreover, we also design and produce essential forging tools such as: dies, trimmers, housings, electrodes and various devices for processing. Preliminary or final machining processing and galvanic coverings (silver plating, tin plating, etc) are available on request.

Forged products are manufactured from the copper and copper alloys listed in all standard delivery conditions. Further alloys can be quoted on request.

Material designation according to EN standard		Density [g/cm <sup>3</sup> ]	Electrical conductivity [%IACS]	Chemical Composition
Symbol	Number			
CW004A	Cu-ETP	8,90	56,0	Cu - 99,90%
CW008A	Cu-OF	8,90	58,0	Cu - 99,95%
CW612N	CuZn39Pb2	8,40	25,0	Cu - 59,0-60,0%, Pb - 1,6-2,5%, Zn - remainder
CW614N	CuZn39Pb3	8,40	25,0	Cu - 57,0-59,0%, Pb - 2,5-3,5%, Zn - remainder
CW617N	CuZn40Pb2	8,40	25,0	Cu - 57,0-59,0%, Pb - 1,6-2,5%, Zn - remainder
CW602N	CuZn36Pb2As	8,40	25,0	Cu - 61,0-63,0%, Pb - 1,7-2,8%, Zn - remainder
CW713R	CuZn37Mn3Al2PbSi	8,10	12,0	Cu - 57,0-59,0%, Al - 1,3-2,3%, Zn - remainder
CW303G	CuAl8Fe3	7,70	9,0	Al - 6,5-8,5%, Fe - 1,5-3,5%, Cu - remainder
CW306G	CuAl10Fe3Mn2	7,60	9,0	Al - 9,0-11,0%, Fe - 2,0-4,0%, Cu - remainder

- technology – hot and cold forging
- copper and copper alloys (brass, bronze)
- die forgings from 0.05 to 20.00 kg
- open die/hand forging up to 50.00 kg
- largest projected area up to 350 cm<sup>2</sup>
- delivery condition: raw, annealed

**ZOP**